

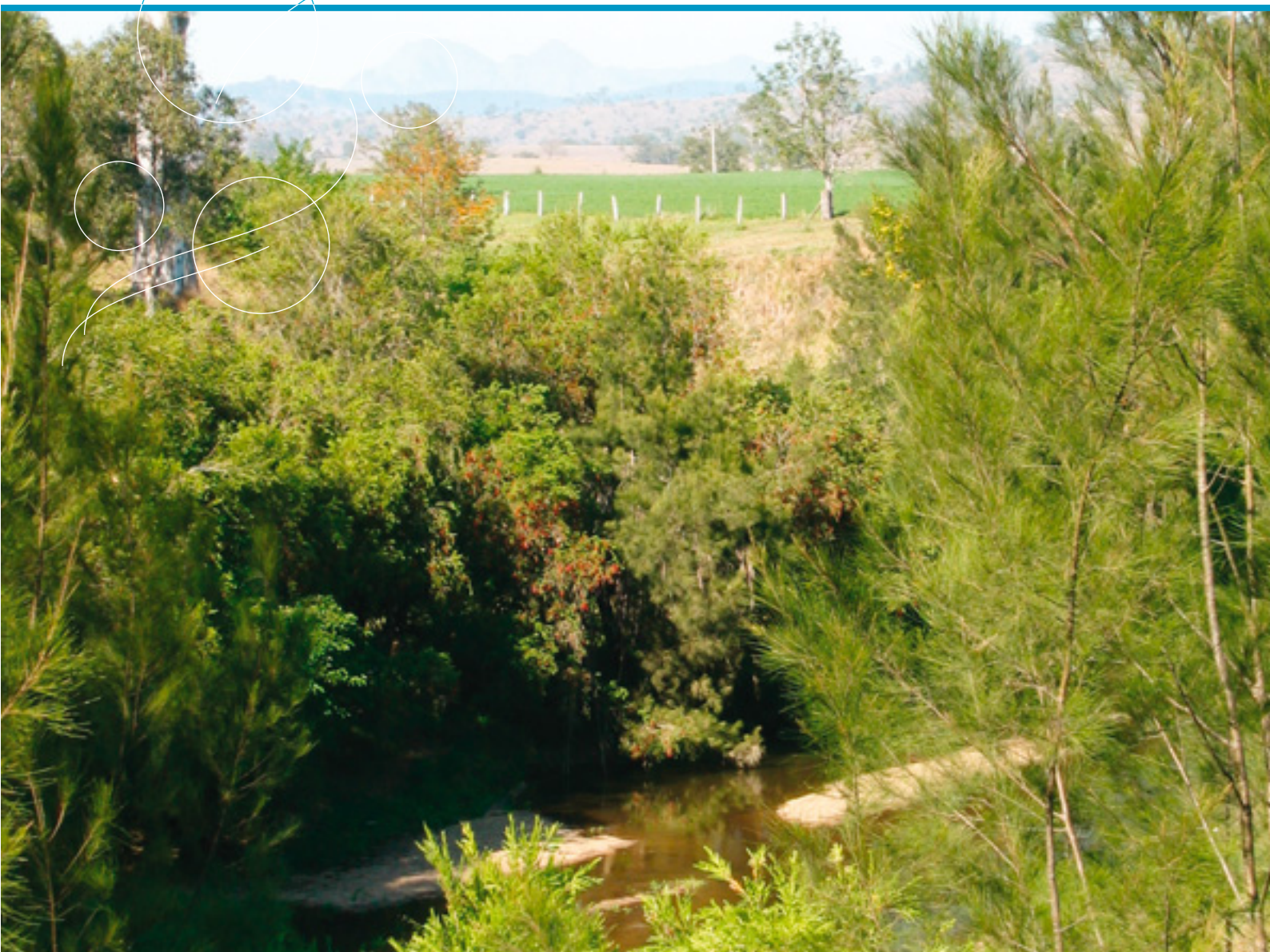


Logan Basin

draft resource operations plan

summary

December 2008



Prepared by:

Water Services (South) South East Region

Department of Natural Resources and Water

© State of Queensland (Department of Natural Resources and Water) 2008

This document has been prepared with all due diligence and care, based on the best available information at the time of publication. The department holds no responsibility for any errors or omissions within this document. Any decisions made by other parties based on this document are solely the responsibility of those parties. Information contained in this document is from a number of sources and, as such, does not necessarily represent government or departmental policy.

Printed December 2008

ISBN 9 311662 180575

#28767

For more information on this document contact:

Department of Natural Resources and Water

Water Services (South) South East Region

1800 308 252

<www.nrw.qld.gov.au>

This publication is available in alternative formats (including large print and audiotape) on request. Contact NRW on (07) 340 43070 or email <communications@nrw.qld.gov.au>.

Message from the Deputy Director-General

The Logan Basin draft Resource Operations Plan (the draft plan) has been prepared for public comment.

This summary highlights important aspects of the draft plan and explains how anyone with an interest in the management of rivers and infrastructure in the plan area can have a say on the proposals it contains.

When finalised, the resource operations plan will implement the outcomes and strategies specified in the *Water Resource (Logan Basin) Plan 2007*. Together the plans will provide an enhanced level of certainty and security for human consumptive water use and for the natural environment.

While the water resource plan strives to achieve a sustainable balance between meeting human needs and those of the environment, the resource operations plan is concerned with the practical business of sharing and managing the water resources from day-to-day, in a way that meets the water resource plan objectives.

I encourage interested parties to make a submission if they have any issues they wish to raise in regard to the finalisation of the draft plan.

I look forward to considering the submissions that will provide important guidance on implementing the final resource operations plan.

Debbie Best
Deputy Director-General
Department of Natural Resources and Water

Purpose of the draft resource operations plan

The Logan Basin draft Resource Operations Plan (the draft plan) sets out the proposals for managing surface water in the Logan Basin plan area, in accordance with the *Water Resource (Logan Basin) Plan 2007*.

In supporting the goals of the water resource plan, the draft plan provides an adaptive framework that will foster new standards of water efficiency, innovation and sustainability that are also in line with the goals of the National Water Initiative, and other state and federal government agreements and commitments.

The draft plan is available for public comment and feedback. All submissions, properly made by 5pm, 20 February 2009 will be considered by the Chief Executive of the Department of Natural Resources and Water (the department) prior to plan finalisation. A submission form is included with this summary document.

You can obtain a copy of the draft plan by contacting the department on 1800 308 252, by emailing <logan.rop@nrw.qld.gov.au> or by visiting the department's website at: <www.nrw.qld.gov.au/wrp/logan>.

Water use in the plan area

The Logan Basin plan area is approximately 4200 square kilometres and includes the Logan and Albert rivers and the Redlands subcatchments (see plan area map). Irrigation accounts for approximately two-thirds of water use, with the remainder consumed by urban areas and industry.

The plan area supports significant irrigated agriculture, including dairying, fodder crops, cereal and horticulture crops. Irrigated agriculture is centred on the Logan River Water Supply Scheme, with water for irrigation also taken from the Albert River, Teviot Brook, and Palen, Christmas, Running and Canungra creeks.

Town water for Beaudesert, Rathdowney, Kooralbyn, South Maclean and Cedar Grove is taken directly from the Logan River, and Beaudesert also draws water from the Albert River. Canungra draws its supplies from Canungra Creek, while some water for the Redland City Council area is drawn from Tingalpa Creek.

Water in the Logan River Water Supply Scheme is supplemented from Bromelton Weir and Cedar Grove Weir on the Logan River, and Maroon Dam on Burnett Creek.

What the resource operations plan will do

When finalised, the Logan Basin Resource Operations Plan will implement the water resource plan, which provides a 10-year framework for the sustainable allocation and management of the basin's water resources.

The final Logan Basin Resource Operations Plan will implement the water resource plan by providing for:

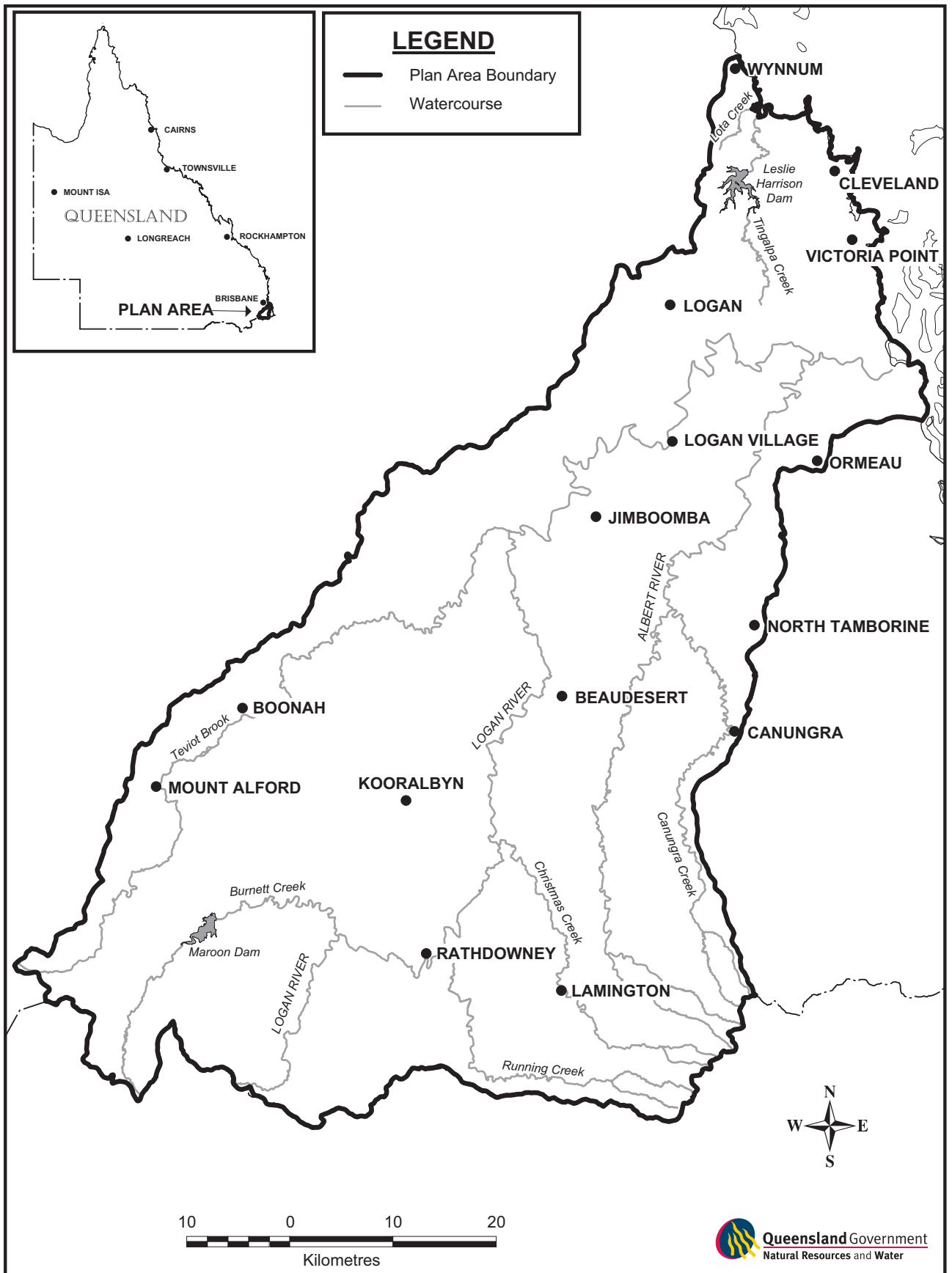
- the protection of existing water entitlements
- processes for dealing with existing and new water licence applications
- processes for dealing with unallocated water
- the conversion of approximately 260 water entitlements into tradable water allocations
- the establishment of trading zones and specifying rules for trading water allocations
- the establishment of water sharing rules and infrastructure operating rules applicable to the Logan River Water Supply Scheme
- the management of unsupplemented water allocations in water management areas
- implementation of metering programs
- monitoring and reporting requirements.

In accordance with the water resource plan, the Logan Basin Resource Operations Plan will initially deal with priority area 1, which is the area of the Logan River Water Supply Scheme. Subsequent amendments to the resource operations plan will occur to deal with other parts of the plan area.

Protecting existing water users and the environment

The draft plan proposes rules for protecting the entitlements of existing water users and the water needs of the environment, in accordance with the objectives and outcomes specified in the water resource plan. The proposed rules will ensure that water infrastructure is operated in a way that maintains environmental flows and existing water user's access to water. The rules will also ensure that any future decisions about the allocation and management of water do not affect the security of water for existing water users or the environment.

Figure 1: Logan Basin water resource planning area





Converting into tradable water allocations

The draft plan proposes to convert approximately 170 supplemented entitlements in the Logan River Water Supply Scheme into tradable water allocations. Approximately 90 unsupplemented entitlements within the area covered by this scheme will also be converted to tradable water allocations.

This outcome is consistent with a key objective of the National Water Initiative, which shows a clear preference for entitlements to be held by end-users as tradable water allocations.

Experience in other parts of Queensland and throughout Australia demonstrates that tradable water allocations promote efficiency and high-value use. This is achieved through the creation of a water market that is subject to the same supply and demand forces that promote competitive efficiency elsewhere in the economy.

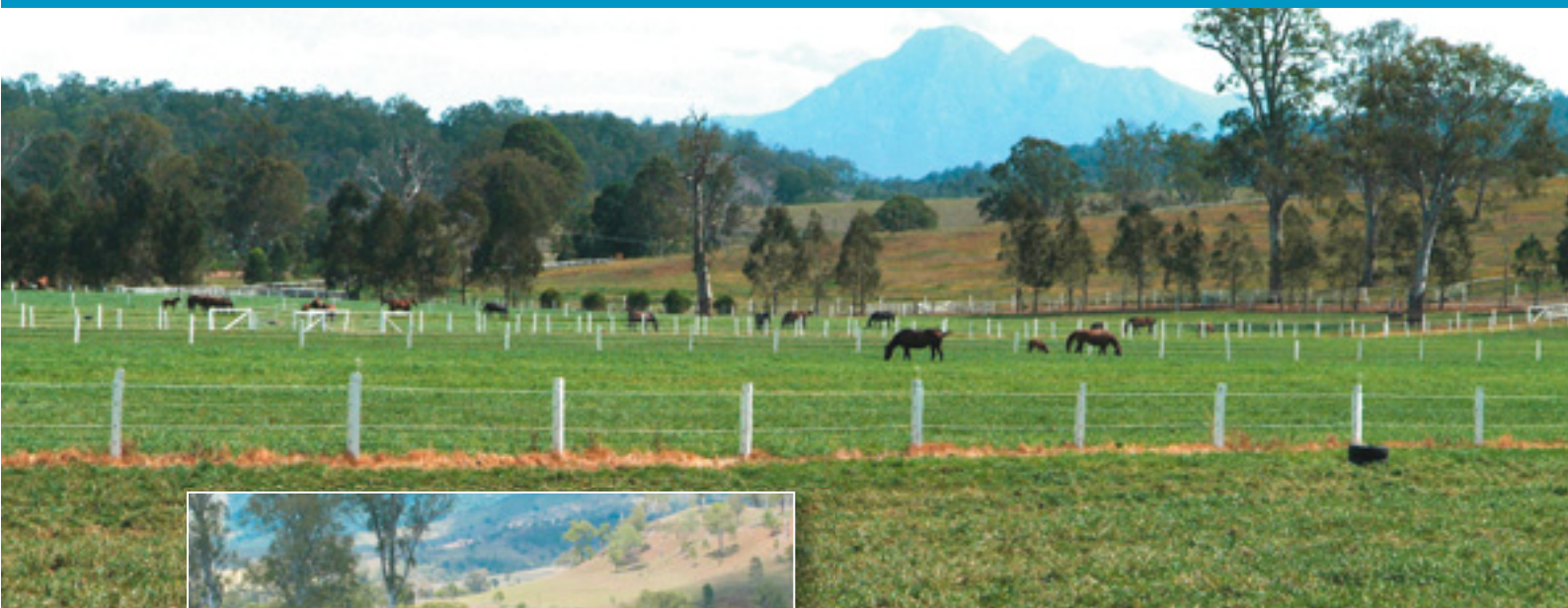
Water allocations include performance indicators that specify the probability of the entitlement being fully available from year to year. Rules proposed in the draft plan aim to protect the performance of water entitlements from any decisions about the allocation and management of water. The improved level of specification associated with water allocations provides sellers and prospective buyers with a clear idea of the productive value of particular water allocations.

Water allocations, in addition to being tradable, can be leased, subdivided and amalgamated, thus providing for a new level of flexibility, innovation and efficiency.

Entitlements to be unlocked from land

All existing water entitlements in priority area 1 will be converted into tradable water allocations on the release of the finalised Logan Basin Resource Operations Plan. These water allocations will not be attached to land—that is, they can be bought and sold independently of the land they are associated with. Details of these water allocations will be automatically recorded on the state's water allocations register, at no cost to the entitlement holder. The information will include:

- ownership details
- an allocation's nominal volume and annual volumetric limit
- an allocation's current location
- the purpose for which the water can be used under the allocation
- for supplemented water allocations, the priority group to which the allocation belongs (medium or high).



The ownership details for each water allocation must be correctly recorded on the water allocations register. Each entitlement that will be converted is listed in attachment 7 of the draft plan. Entitlement holders should check the details listed in the attachment and inform the department of any errors so that the information can be corrected. The information should be checked to ensure that:

- ownership, whether by a single person or entity, or several tenants in common, is correctly recorded
- shares held by tenants in common are correctly recorded
- the full names of owners are correctly spelled.

Dealing with water licence applications

Under the water resource plan, any application for a water entitlement that would increase the average volume of water allowed to be taken under authorisations in the plan area, or would compromise the water resource plan's outcomes and objectives, must be refused.

Dealing with unallocated water

The water resource plan provides for limited volumes of unallocated water to be made available where future demand cannot be met from existing supplies.

Under section 21 of the water resource plan, unallocated water is reserved for general, strategic use and town water supplies, with the process for release of water from each reserve to be set out in the resource operations plan.

Up to 10 000 megalitres per annum (ML/a) will be available from the strategic reserve in subcatchment 3 of the water resource plan area. This subcatchment covers the main body of the Logan River, which includes the Logan River Water Supply Scheme below Burnett Creek.

Unallocated water made available from the strategic reserve supports the construction of infrastructure associated with implementation of the South East Queensland Regional Plan 2005–2026.

Up to 150 ML/a from the town water supply reserve, as stated under section 29 of the water resource plan, will be made available from Canungra Creek.

Additional unallocated water will only be made available where it can be demonstrated that it would not be detrimental to water allocation security objectives, environmental flow objectives or the broader goals of the water resource plan.



The rules detail how water is to be shared between users, what changes may be made to water allocations and how infrastructure is to be operated. Monitoring and reporting arrangements for the scheme are also outlined in the draft plan.

The resource operations licence holder will also be responsible for calculating and specifying announced allocations and dealing with seasonal water assignments.

Zones and rules for trading

In line with National Water Initiative goals, the draft plan's provisions aim, where possible, to allow the movement of water allocations, subject to consistency with the water resource plan outcomes and objectives.

Hydrologic modelling has been used to test the extent to which water allocations can be traded or moved to new locations without detriment to the water resource plan outcomes and objectives. Accordingly, water allocations will be grouped into zones that will determine the nature and extent of any changes that may be permitted.

Water allocations located in any zone will be allowed to move freely within the zone in which they are located. In addition, rules will permit relocation of some supplemented water allocation volumes between specified zones.

Logan River Water Supply Scheme

The draft plan sets out the rules and responsibilities that apply to the resource operations licence holder for the Logan River Water Supply Scheme. The Queensland Bulk Water Supply Authority is the resource operations licence holder for the Logan River Water Supply Scheme.

Unsupplemented water allocations in water management areas

The draft plan sets out rules for water sharing, water allocation changes and seasonal assignment of unsupplemented water allocations within the Burnett Creek and Logan River Water Management Areas. Under the draft plan, all water taken under unsupplemented water allocations will be metered, and extractions will be managed by the department. For example, the department will announce when water can be taken and ensure that extractions accord with the overall planning requirements.

Exceptions to the rules for water allocation holders

The draft plan proposes water allocation changes that will be allowed on application and those that will not be allowed. It may be possible to make changes to a water allocation that are neither expressly allowed nor forbidden in the draft plan. Such changes can only be made on application to the chief executive of the Department of Natural Resources and Water under section 130 of the *Water Act 2000*.

Proponents will bear the cost of any analysis or other work that may be necessary for their applications to be assessed.

Metering programs

Water entitlements that are converted to water allocations or volumetric licences will be required to be metered. Water taken only for stock or domestic uses that is associated with a riparian right will not be metered.

Metering assists water users to make more effective use of water entitlements and ensures that planning objectives are achieved. Meters are also necessary to manage the taking and sharing of water, and to provide information for monitoring water use, which assists entitlement holders in complying with their entitlement conditions.

The metering program will be consistent with National Water Initiative accounting goals and the statewide Metering Water Extractions Policy.

The Metering Water Extractions Policy and fact sheets about metering are available on the department's website at: <www.nrw.qld.gov.au/water/use/index>.

Monitoring and reporting requirements

Resource operations licence holders and the department will undertake the monitoring and reporting requirements established in the draft plan.

Resource operations licence holder monitoring will include information such as:

- storage levels
- releases
- water use
- water quality
- fish stranding
- bank slumping.

The department is responsible for monitoring stream flows and for conducting ecological monitoring and assessment.

The monitoring and reporting program set out in the draft plan will be essential for assessing the effectiveness of the implemented water resource plan.



How to make a submission

Anyone can make a submission on the Logan Basin draft Resource Operations Plan.

Submissions must be made and sent by 5 pm, 20 February 2009.

To make a written submission, please use the submission form included in this brochure. Complete the five steps in the checklist on the form to ensure the submission is properly made. Only properly made submissions will be considered by the Chief Executive of the Department of Natural Resources and Water in finalising the resource operations plan.

You can post, fax or email written submissions to the department:

Postal address

Chief Executive
Department of Natural Resources and Water
(Attention: Sueanne Langbein)
Water Services (South) South East Region
PO Box 1653
Coorparoo DC Qld 4151

Facsimile

(07) 3224 2933

Email

logan.rop@nrw.qld.gov.au

Internet

Alternatively, you can submit an online submission on the department's website at:
<www.nrw.qld.gov.au/wrp/logan>

Enquiries

If you would like more information, please phone 1800 308 252.

Resource operations plan referral panel

An independent referral panel may be established to provide advice to the chief executive on issues arising from submissions on the draft plan.

The referral panel will review submissions where contentious issues or concerns are raised. The panel is then required to make recommendations to the chief executive. For example, a referral panel may provide advice to the chief executive if a properly made submission about the draft plan requests that a change be made to a proposed water allocation, an environmental management rule, a water-sharing rule, or an implementation schedule.

The chief executive will consider all properly made submissions and the referral panel's recommendations when finalising the resource operations plan.

Submission form

Logan Basin draft Resource Operations Plan

Submissions are being sought from interested individuals and groups regarding the Logan Basin draft Resource Operations Plan.

(Please use a ballpoint pen to make this submission)

Checklist

Please follow these five steps to ensure the submission is completed correctly:

- The name of the person(s) making the submission and a postal address has been included.
- The submission form has been signed by the person(s) making the submission.
- The grounds for making the submission, and the facts and circumstances relied on in support of the submission have been stated.
- If additional space is required, the box at the end of the submission form has been ticked and the detailed submission is attached.
- The submission is made and sent by the closing date, **5.00 pm on 20 February 2009**.

Post, fax or email this form and any attachments to:

Chief Executive
Department of Natural Resources and Water
(Attention: Sueanne Langbein)
Water Services (South) South East Region
PO Box 1653
Coorparoo DC Qld 4151

Fax: (07) 3224 2933
Email: logan.rop@nrw.qld.gov.au

Telephone enquiries: 1800 308 252

Office Use Only
Submission No:
Date Received:.....

Details

Name(s) (Mr/Mrs/Ms/Dr)

Address

..... Postcode

Phone number Mobile Fax.....

Email

Signature(s)

Which interest group(s) do you represent?

You may tick more than one box or number in order (using 1 as your primary interest)

- | | | |
|--------------------------------------------------|---------------------------------------------------|----------------------------------------------------|
| <input type="checkbox"/> Urban water user | <input type="checkbox"/> Riparian landholder | <input type="checkbox"/> Horticultural industry |
| <input type="checkbox"/> Water service provider | <input type="checkbox"/> Irrigator | <input type="checkbox"/> Tourism industry |
| <input type="checkbox"/> Local government | <input type="checkbox"/> Water harvester | <input type="checkbox"/> General industry/business |
| <input type="checkbox"/> Environmental interests | <input type="checkbox"/> Dryland farmer | |
| <input type="checkbox"/> Indigenous community | <input type="checkbox"/> Intensive stock industry | |

If marking a box below please specify

- Natural resource management or catchment body
.....
- Industry representative body
.....
- State/Commonwealth Government agency
.....
- Recreational group
.....
- Community group
.....
- Other
.....

Your comments on the draft resource operations plan

What features of the Logan Basin draft Resource Operations Plan do you think are worthwhile? What issues concern you? How do you think the Logan Basin draft Resource Operations Plan could be improved to address these issues?

Please indicate the chapter, part or clause number to which your submission refers, if applicable

.....

.....

.....

.....

.....

.....

.....

.....

- Please tick this box and attach a detailed submission if more space is required.

